

# Brunel Apartments

Brunel Apartments is a luxurious new development providing four modern luxurious self contained living areas located in Newcastle upon Tyne.

Brunel Apartments have been specifically designed to meet the needs of individuals who may have a learning disability, autistic spectrum disorder, and / or an additional Mental Health difficulty; and / or who may have required a more intensive environment in the past (eg challenging behaviour).

Set within St Stephen's Court Care Home, Brunel Apartments offers individuals the ideal environment to lead a more independent lifestyle, while still having the support of our team on site should they require it.

We are able to provide 24 hour advice and support delivered by an experienced, specially trained staff team of Nurses, Carers and Support Staff who have access to a wide range of specialist staff including our in-house Physiotherapist, Occupational Therapist and Behavioural Therapist.

The service's aim is to support, stabilise and provide a pathway to other "ordinary living" models of care. Bespoke transition programmes will be designed to reflect the specific needs of the individual.

The staff team will work closely with Service Users to build therapeutic relationships that will optimise individual functioning, promoting emotional and physical wellbeing.

Our aim is to work closely with our Service Users and Professionals to actively support participation in activities that encourage social inclusion whilst maintaining their own safety and that of those around them.

We respect the rights and opinions of clients by providing appropriate support to enable participation in opportunities that will lead to a fulfilling and meaningful life.

Individuals living at Brunel Apartments are also able to access the full range of facilities at St Stephens Court including The Inspire Centre and other Careline Lifestyles services including activities in rural Northumberland and vocational opportunities at local colleges.

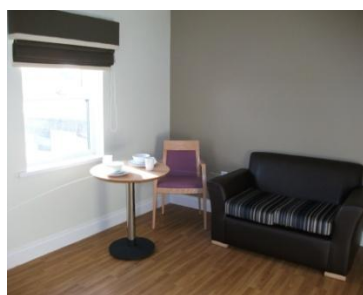
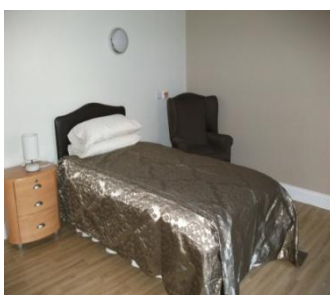
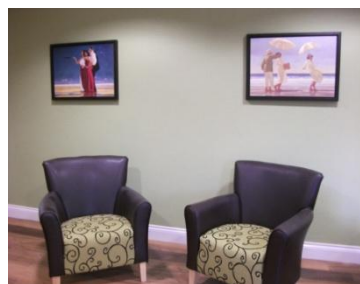
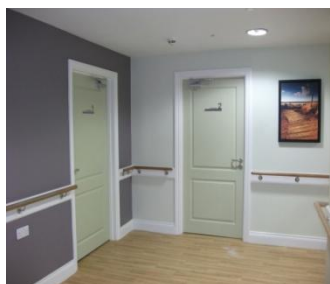
Service Users are encouraged to participate in planning their own support and contributing their views regarding how the Service should be run by becoming involved in our Discussion Forum 'My Say'.



## Ideal Environment

The accommodation is located on the first floor providing level access to four generously proportioned independent living apartments.

Each apartment is self contained and consists of a living room area with kitchen/dining facilities and a separate bedroom. Two of the apartments offer en-suite toilet/wet room and two provide an independent toilet/wet room.



### How to find us:

*By train or metro:*

Newcastle Central Station is only 15 minutes walk away

*By car:*

From North and South: follow directions to Newcastle. As you cross the Redheugh Bridge move into the left hand lane and turn left immediately after you cross the bridge. Continue along Scotswood Road (A695) and turn right at the first set of traffic lights following the signpost to Elswick. At the T-junction at the top of the bank turn left onto Westmorland Road and then left into Brunel Terrace.



Brunel Gardens, Brunel Terrace, Newcastle upon Tyne NE4 7RL

Tel: 0191 273 0303 Fax: 0191 273 0404 Email: [spireview@carelinelifestyles.co.uk](mailto:spireview@carelinelifestyles.co.uk)

[www.carelinelifestyles.co.uk](http://www.carelinelifestyles.co.uk)

Registered Manager – Sarah Richardson Tel: 0191 273 0303

Care Co-ordinator – Anita Ennis Tel: 07703 257 565